

SST 10kW Tunnel Generator Three Phase 120/208VAC



FischerPanda®

The Fischer Panda SST 10kW is compact, quiet and powerful. Designed to fit within the SICPS System, the SST 10kW has taken the decibel level down to 57 dBA at seven meters. A trailer mount version is also available upon request.

In addition, Fischer Panda Generators are the only 100% liquid-cooled asynchronous generators available in the United States that liquid cools both the engine and the alternator. The rotor has no windings brushes or diodes as is the case with conventional synchronous generators. With fewer moving parts, perfect rotor balance, a sealed long-life stator and a nearly perfect sine wave the SST series is an ideal solution for all your mobile mission requirements.

FEATURES INCLUDE:

- 57 dBA at 7 meters
- EMI hardened
- Digital diagnostic control panel
- 759 lbs. (wet) with no sound abatement needed in the shelter
- Emergency automatic shutdown for low oil pressure, high coolant, windings and oil temperature, short circuit overload
- Manual emergency stop and battle short switch



FischerPanda®



SMALL



LIGHT



QUIET

351 S. Andrews Avenue
Pompano Beach, FL 33069
U.S.A.

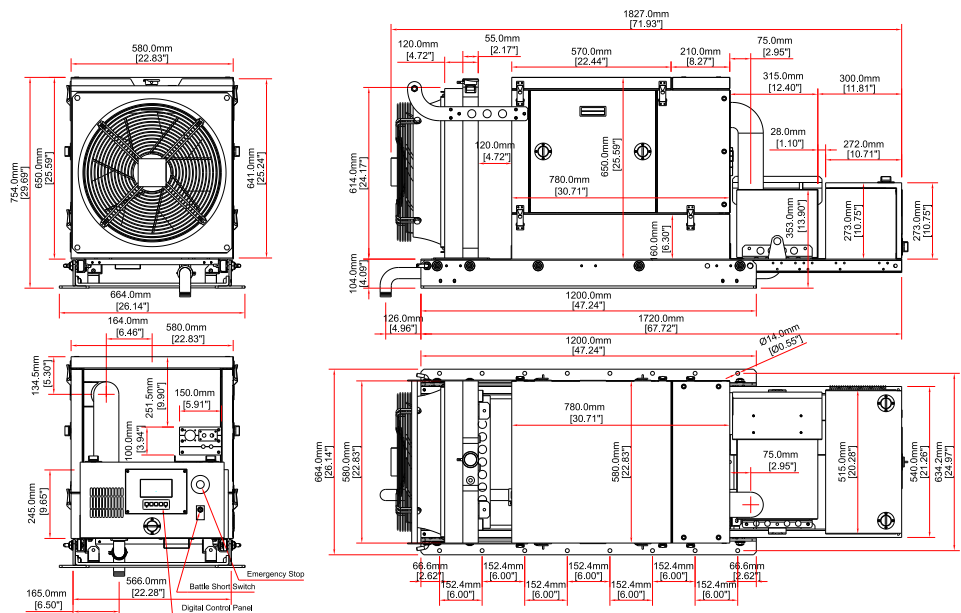
www.FischerPanda.com/Military

Phone: 954-462-2800
Fax: 954-462-2801
Toll-free: 800-508-6494

MilSupport@FischerPanda.com

SPECIFICATIONS	
Engine	Kubota Turbo-Charged Diesel Engine
Cylinder	3
Frequency	60Hz (also available in 50Hz)
Start System	24VDC
Preheat System	24V Glow Plugs & Flame Start
Dimensions (LWH)	74" x 24.8" x 28.8" (1880mm X 630mm X 732mm)
Weight (Wet)	759 lbs (345kg) wet weight, including slide
Instrumentation	Digital Control Panel Start/Stop/Preheat Switch
Fuel	Diesel, DL-1, DL-2 and Jet Fuel JP-5 and JP-8
Power Rating	10kW @ 0.8pf
Derate	3.5% Per 1000 Feet Above 4000 Feet
Temperature (other temperatures available upon request)	Operating -25°F to 120°F (-32°C to 50°C)
Storage Temp.	Storage -50°F to 160°F (-45°C to 71°C)
Fuel Consumption	0.8 Gal/H@ rated Max load
Noise Level	57dBa at 7 Meters
Electrical	Asynchronous with variable compensation
Amps	34A per phase
Volts	Three Phase 120 / 208 V
Protective Devices	Emergency automatic shutdown for low oil pressure, high coolant, windings & oil temp., short circuit overload. Manual emergency stop switch and battle short switch.

Due to our policy of continual product development, we reserve the right to alter these specifications without notice.



351 S. Andrews Avenue
Pompano Beach, FL 33069
U.S.A.

www.FischerPanda.com/Military

Phone: 954-462-2800
Fax: 954-462-2801
Toll-free: 800-508-6494

MilSupport@FischerPanda.com

